



RACKING & SHELVING

creating for better life



NEXT GEN RACKING & SHELVING FOR SMART OPERATIONS

Challenging ourselves with some of the most demanding projects across the world.

We are a new generation enterprise with combined experience of more than 20+ years in supply chain intra-logistics, specialists with a deep understanding in various industry segments like E-commerce, Retail, 3PL, Pharma, Automotive, Chemicals, Textiles, Engineering, Food and Beverage, etc.

We design, supply and install end to end solutions required for a warehouse providing storage, material handling, automation and goods to man technologies.

LIST OF CONTENT

Shelving System

Pallet Racking

Automated Solution

Mezzanines Floors

Special Racks

Material Handling Equipment (MHE)

IT Infrastructure

SHELVING SYSTEMS

Our world-class, holistic shelving solutions are recommended and supplied to clients based exclusively on their unique requirements

Industrial shelving is the perfect commercial and industrial shelving solution for manual storage of light and relatively heavy loads.

BOLTED SHELVING

Bolted shelving units, a true Cape Town original. It's the ideal system for manual storage of light and even relatively heavy loads, used for small part storage, archiving and filing.

MOBILE SHELVING

Mobile shelving uses a sliding system which is fitted to specially engineered metal tracking on the floor, allowing them to roll forward and backwards using either a manual or chain driven system.

MULTI-TIER SHELVING

Multi-tier shelving is the construction of shelving at two or more levels using the same components used for selective pallet racking or heavy duty shelving. Multi-tier Shelving is suitable for medium to large size warehouses. It is ideal for storage and distribution of large small parts SKUs with medium turnover.



QUALITY YOU TRUST

Class leading supplier of shelving.

We are into Heavy Duty Shelving, Multi-Tier Shelving, Slotted Angle racks, Boltless Racks, Cold room Shelving systems, etc.

The main the use of shelving systems are to store items accessible by hand or tools.

PALLET RACKING

Selective Pallet Racking (SPR/HDR), Double Deep Racking, etc..

SELECTIVE RACKING SYSTEM

Selective racking is the most commonly used warehouse racking system. It allows pallets to be selected from the racking face by Stacker/ Reach Truck operators without requiring them to move other product first. All pallets in inventory are directly and equally accessible at all times.



DOUBLE DEEP PALLET RACKING

It's storage system that is halfway between adjustable pallet racking systems and compact storage systems. In double deep pallet racking, the unit loads are stored mechanically by Stacker/ Reach Truck that move along the aisles arranged in parallel to the racking systems.

Pallet racking is a multi-level storage system that is utilized to support high stacking of single items or palletized loads. Pallet rack systems are a fundamental component of any distribution, storage, or material handling operation. Pallet racks allow rapid access to stored materials.

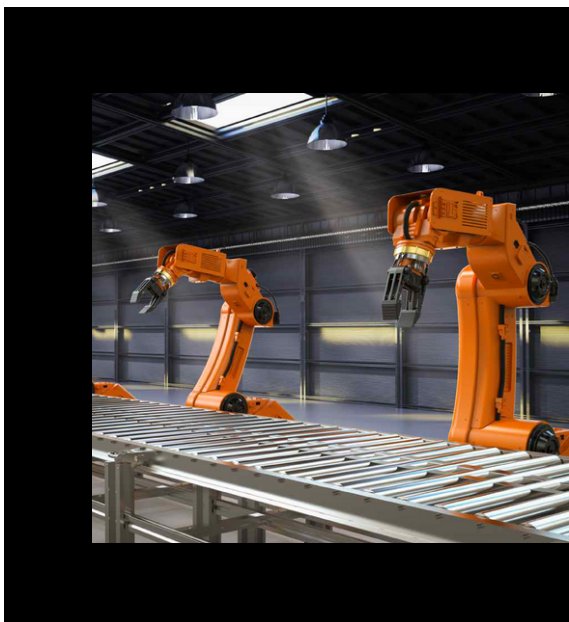
AUTOMATED SOLUTIONS

ASRS, Shuttle Systems, Automatic AGVs, Robotics, etc.

Integrating automation along with storage facility leads to reduction in labour expenses, higher efficiency, overall intralogistics optimisation and faster operations along with minimized human error. Investing in your business today while having a vision of tomorrow, is what is required to keep up with an ever-changing market.



Shuttle based is a fully automated solution for storage of goods. Like radio shuttle racking system, this system also uses a shuttle or a fleet of shuttles that run on tracks in between the racking system. These shuttles are perfectly capable of storing goods deep into the shelves which is why they are highly suited for warehouses with ultra-compact storage. The shuttle starts from one end of the rack, picks up/drops the load and returns to the same end.



Growth in business leads to larger and larger warehouses with vaster number of SKUs. As the consumer market grows so does the need for advancing warehouses with latest automation systems that can convert a warehouse facility into a distribution centre as well as fulfilment centre in case of e-commerce business to make your business future ready.

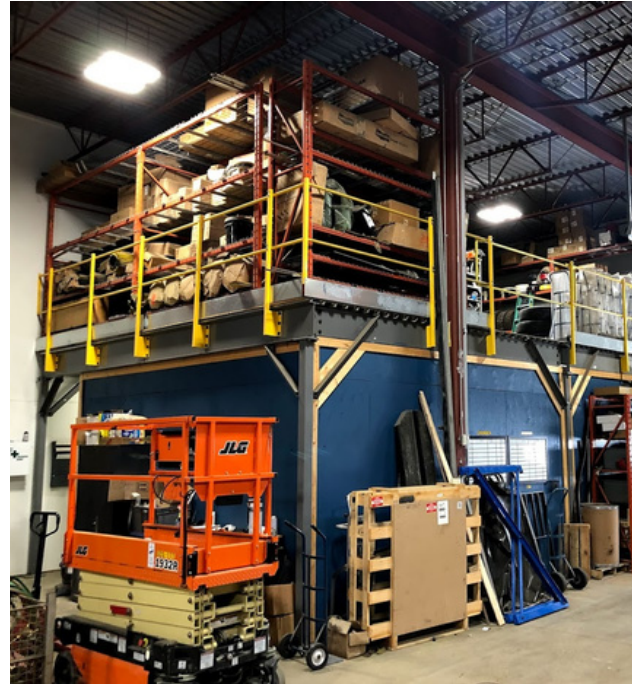
MEZZANINES FLOORS

A mezzanine level is an intermediate floor between levels of a building that is used for increasing the floor area of the building without adding on to the building itself. It can be used for countless applications like storage, work operations, equipment access, inventory rack access, and conveyor access.

EFFICIENT & HYBRID SYSTEMS

In order to accommodate materials handling, tall racking, and the demands of future businesses, most warehouses have a large amount of headroom. Mezzanines as high as 5mtrs can be made & then above mezzanine area can be used for installing racks to provide efficient usage of warehouse heights.

MEZZANINES WITH RACK



CUSTOMIZATION & FLEXIBLE

We'll design a single or multi-tiered mezzanine construct to your precise business requirements. Our structural steel mezzanines are custom built to suit your workspace, budget and intended functions, while remaining flexible enough to be relocated or repurposed.

FOR WAREHOUSE - OFFICE

SPECIAL RACKS

Special Racks are unique racks designed to be used non ordinary or special circumstances, These include Drive-in racks, FIFO Racks, Cantilever racks, etc.

Drive-in Pallet Racking is based on the storage by accumulation principle, maximizes utilization of both space and height by stacking large volumes of a single SKU together.

Cantilever Racking is used for storing large, bulky and awkward items. Most commonly used in facilities that need to store long items such as stacks of lumber, sheet metal, piping, vinyl siding, furniture, rolls of carpet, etc.. a solid base and upright vertical columns allow cantilever arms to be attached at varying heights to accommodate virtually any product shape and length.



FIFO Rack systems are ideal for customers requiring rapid stock rotation, have a high turnover rate for inventory, or store items with expiration dates. For example, FIFO food storage applications allows for constant product movement, safeguarding that no inventory spoils or goes to waste.

MATERIAL HANDLING EQUIPMENT (MHE)

Such equipment, known as warehouse Material Handling Equipment or simply MHE, help reduce manual effort while safely and efficiently executing various tasks.

Material Handling Equipment (MHE) encompasses a diverse range of vehicles, tools and storage equipment. Typically, a warehouse is used to store items, and then move them to where they are needed. The easier it is to move items, the more efficient your warehouse can be. To increase efficiency, you need to have the right tools for the job – it will make your employee's lives easier, and cut down on the backbreaking strain they'd otherwise be exposed to with improper equipment.



STACKERS



DOCK LEVELLERS



**HYDRAULIC HAND
PALLET TRUCK**



REACHTRUCK



ORDER PICKER



**GROUND MOMENT
VEHICLE**

I.T INFRASTRUCTURE

Hardware : RFID , Bar Coding, Hand held equipment, CCTV camera, Computers, scanners, etc.

Software : OMS (Order Processing Systems) , WMS (Warehouse Management Systems), etc.

BILLING & PROCESSING TOOLS & SOFTWARE FOR WAREHOUSE

We, Divine Solutions provides one-stop solution for Warehouse Management Services. We'll setup your warehouse from Storage Systems, Shelving to Billing and Management Hardwares and Software. A warehouse management system (WMS) is a software solution that offers visibility into a business' entire inventory and manages supply chain fulfillment operations from the distribution center to the store shelf and we even provide you with necessary tools like CCTV Cameras, Computer System, Barcode Scanners, etc.



ORDER PROCESSING SYSTEM SOFTWARE

We'll provide you Order Processing System (Software) which captures order data from customer service employees or from customers directly, stores the data in a central database and sends order information to the accounting and shipping departments, if applicable. Order processing systems provide tracking data on orders and inventory for every step of the way.



Divine Solutions is known to be one of the most influential leaders and a coveted name in the Storage, Warehousing and Automation industry.



Divine Solutions

Headquarter : 13- Jay Shree Khodal Krupa Estate,
B/H IOC Petrol Pump, Gota, Ahmedabad-382481, (Guj), India.

Email us on sales@divinesolutions.in
Call on (+91) 999-883-2336